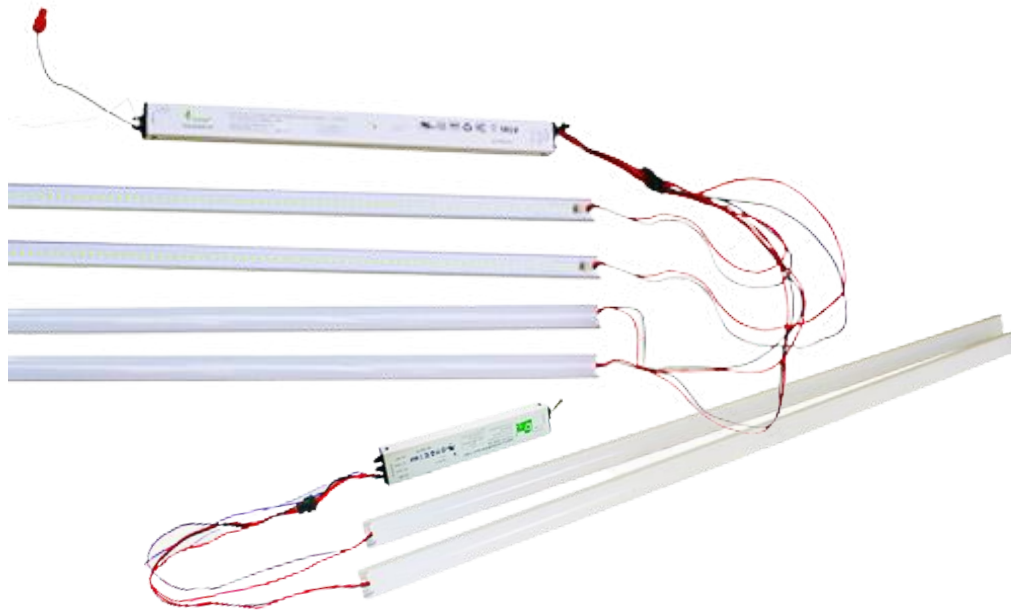




Industrial & Commercial LED Lighting Company

4403 Greenbriar Dr, Stafford, Texas 77477
Tel No. 1-800-8385070
Monday - Friday 8:30 AM to 5:30 PM

820 SERIES MAGNETIC TROFFER STRIP LED RETROFIT KIT

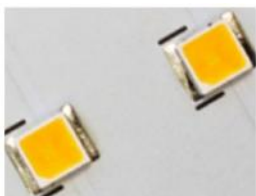


Product Features:

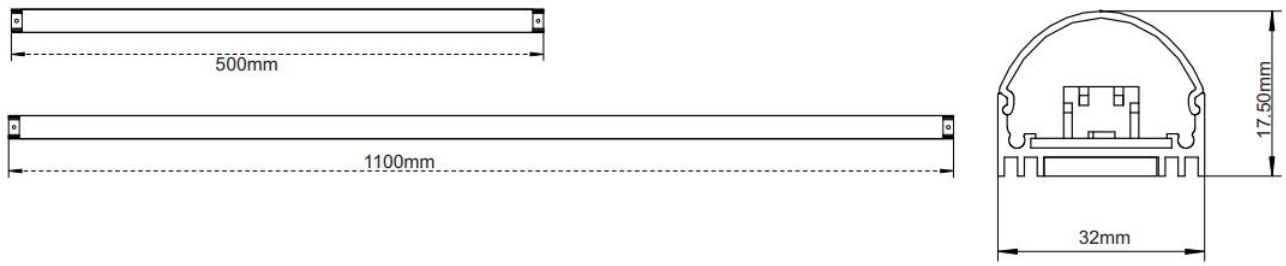
- Eco-friendly without mercury
- Very easy to fix by magnet and screws
- External driver, male and female connection
- 120LM/W, RA>80

Suitable Application:

- Workshop
- Factory
- Office
- Shopping mall
- Large supermarket
- Exhibition hall
- Warehouse
- Home
- Hotel
- School facility, and other places of need illum.



Dimension & Weight



Product Series

Size	500mm	1100mm	1100mm	
Luminous Efficiency	120lm/W			
Input Voltage	AC100-277V			
CRI	>80			
Life span	50000H			
Power Efficiency	>0.88			
PF	≥0.92			
Input Frequency	50/60Hz			
Standard Warranty	5 Years			

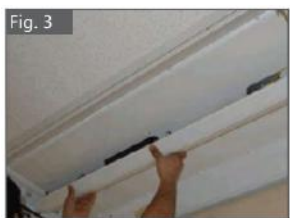
Installation



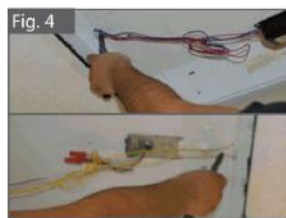
Step 1:
Cut off the power of the troffer retrofit kit before any operation. Pull the movable bolt at the edge of the troffer retrofit kit and open the cover.



Step 2:
Take out the fluorescent tubes one by one.



Step 3:
Open the top cover of wiring box.



Step 4:
Dismantle the ballast and circuit of the fluorescent tubes.



Step 5:
A. Take out the LED Magnet Tubes from the package box. B. Stick the LED Tubes onto the troffer. Adjust its position to make sure they are placed horizontally in proper position.



Step 6:
Take out the LED driver and screws we provide; fix the driver onto the position of the previous ballast.



Step 7:
Connection mode of LED Driver's Input Wire(See Fig. 7):
White: Live Wire
Black: Null Wire
Yellow/Green: Ground Wire



Step 8:
Connect the Connection Wire to the OUTPUT terminal of the LED driver.



Step 9:
Connect the Connection Wire to the LED Tubes through 2P socket one by one.



Step 10:
Finish all connection between LED driver and LED strips.



Step 11:
Install the top cover of the wiring box to cover the LED driver.



Step 12:
Pull the movable bolt at the edge of the troffer retrofit kit and close the cover slightly.



Step 13:
Recover the power supply and have a test. Replacement of LED Magnet Tubes is completed.

Application



Safety Precautions

- Please cut off the power before any installation or maintenance work.
- Please strictly follow the opera rules and use the right tools in the installation.
- The Lighting fixtures shall be installed, connected, and tested by licensed electricians.