



**Industrial & Commercial LED Lighting Company**

4403 Greenbriar Dr, Stafford, Texas 77477  
Tel No. 1-800-8385070  
Monday - Friday 8:30 AM to 5:30 PM

## 888 SERIES EXPLOSION PROOF LED FLOOD LIGHTS

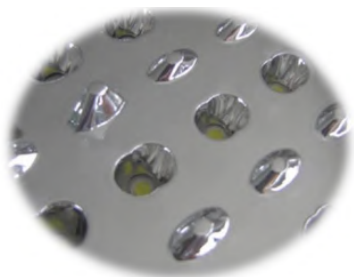


### Product Features:

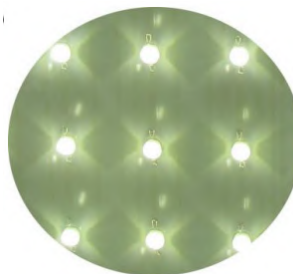
- High efficiency low decay LM80 Certify 700MA 45 Mil LED chip
- Excellent heat transmit die cast ADC12 aluminum housing, patent design
- IP68
- Shock and vibration resistant tempered glass, super clear 95% light transmit rate
- Anti-glare. Scientific optical reflector design, making the light more focused and distributed evenly.
- LM80 Certify LED source
- High luminous efficacy
- Long lifespan
- MEANWELL HLG series driver
- Excellent Design 2011 Award.
- Surface treated - Powder coated, salt and chemical resistant, dust-free
- Surface 8. 2.0mm aluminum in thickness for PCB with heat index 2.5, Cooper 20z , allowing the LED light to function in extreme temperatures
- Working temperature: -40°C to +48°C.

### Suitable Applications:

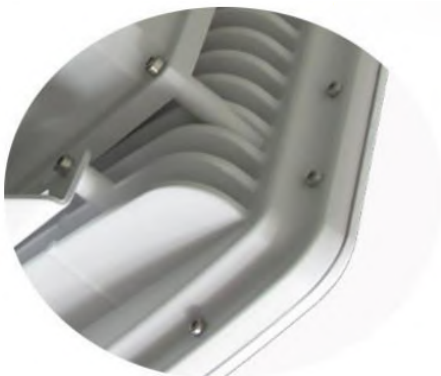
- Suitable for gas station
- Petroleum and chemical industries
- Coal mine
- Military
- Airport
- Warehouse
- Marine, etc.
- Class I Division 2 gaseous environment
- Dust environment.



The integration of reflective optical design, which is directly installed into the body of the light, make the light more direct and comfortable for the eyesight.



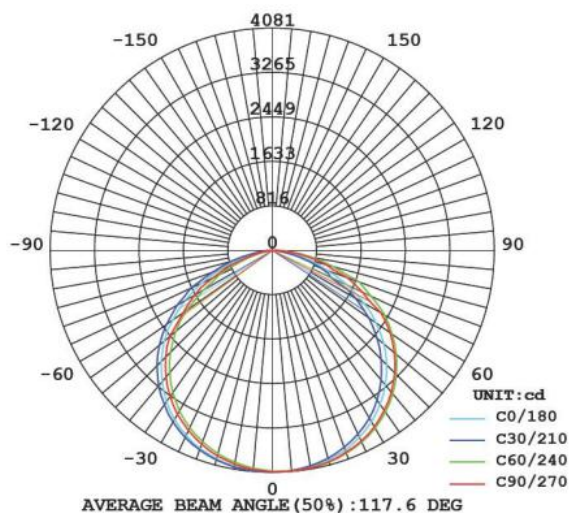
The positioning of the LED chips is engineered to keep enough space in between them for better heat distribution. Which ensures the life span of the product. The special design warrants that each LED chip will continue to work even if any of them fails, allowing the light to continue to function.



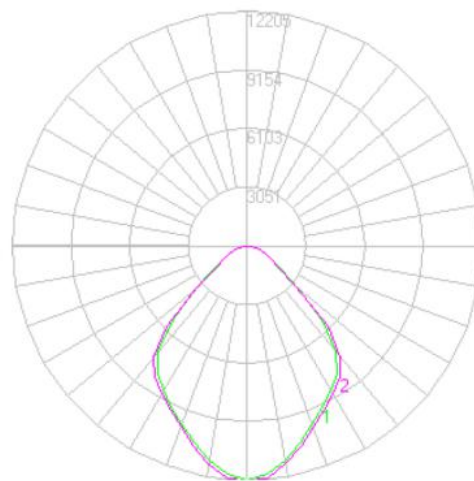
High pressure die casting alloy aluminum housing, created through high pressure (1600 ton) as one piece, high explosion proof level and IP68 waterproof protection.

This special design warrants that each LED chip while working in sync to also function in the event that any of them fail. This allows the light to continue to illuminate

## Photometric



120 x120 ° (30W/100W/180W)



90 °with RF (30W/100W/180W)

Technical Specification

Item No		888C2-100W	888C2-180W
Power		100W	180W
Input Voltage	100-277V		
Frequency	50/60Hz		
Power Factor	>0.98		
THD	<15%		
Led Driver	Meanwell HLG series		
Led Chip		84pcs Bridgelux	156 pcs Bridgelux
Lumen		11500lm	20700lm
Light Efficiency		115lm/W	115lm/W
CCT	2800-5700K		
CRI	>73		
Beam Angle	120°CX120°C , 90°C with RF		

Safety Precaution

1. Read the manual carefully before installing
2. To avoid risk of electric shock & malfunctions, the product must be installed, inspected and maintained by a professional electrician.
3. Be sure the electricity is turned off before installing or maintaining the light
4. The input voltage must not exceed the limit of the range AC100-277V
5. Working temperature must not exceed the limit of the range -40°C to 48°C.